

# BOATEE

## Smart 1.3 User Manual



## Acknowledgements

Thank you for choosing the Boatee Smart 1.3 electric outboard motor.

We are constantly striving to make your boating experience as simple and enjoyable as possible.

Our cutting-edge technology and robust, reliable construction are just part of what makes the Boatee Smart 1.3 unique.

Although we have designed your new outboard to be as intuitive as possible, we encourage you to **read this manual carefully** to understand how to use it correctly and safely.

Our team is constantly working on product improvements and the development of new accessories. Please do not hesitate to share your first impressions and any comments or ideas for improving Boatee.

If you have any queries, suggestions or further questions, please contact us at:

[supporto@boatee.it](mailto:supporto@boatee.it)

Enjoy your time on the water with your new Boatee Smart 1.3!

## **1. USING THIS MANUAL**

- 1.1 General information about this manual
- 1.2 Structure of the safety warnings

## **2. PRODUCT OVERVIEW**

- 2.1 Contents of the package
- 2.2 Identification
- 2.3 Diagram and component names
- 2.4 Technical data

## **3. SAFETY**

- 3.1 Safety devices
- 3.2 General safety instructions
- 3.3 Intended use
- 3.4 Reasonably foreseeable misuse
- 3.5 Before use
- 3.6 General safety warnings

## **4. ASSEMBLY**

- 4.1 Installation / replacement of the propeller
- 4.2 Fitting the engine to the boat
- 4.3 Adjusting the engine trim
- 4.4 Connecting and charging the battery

## **5. OPERATION**

- 5.1 Emergency stop
- 5.2 Starting navigation
- 5.3 Using the touch screen
- 5.4 Forward / reverse
- 5.5 Steering

## **6. MAINTENANCE AND SERVICE**

- 6.1 Corrosion prevention

## **7. GENERAL WARRANTY TERMS**

- 7.1 Duration and validity of the warranty
- 7.2 Warranty Coverage
- 7.3 Warranty coverage
- 7.4 Buyer's rights
- 7.5 Warranty Procedure

## **8. DISPOSAL AND THE ENVIRONMENT**

## **9. COPYRIGHT**

## 1. Use of this manual

By using this product, you agree that you have read and fully understood all the contents of this manual.

Boatee accepts no liability for damage or injury caused by actions that contradict this manual.

Due to the continuous optimisation of our products, Boatee reserves the right to modify the contents described in this manual without prior notice.

Boatee also reserves all intellectual and industrial property rights.

This manual is subject to updates.

Visit our website [www.boatee.it](http://www.boatee.it) for the latest version of this manual.

### 1.1 General information about the manual

This manual describes all the key features of Boatee Smart 1.3

The manual contains:

- Information on the installation, operation and features of the motor.
- Notes on potential hazards, their consequences and measures to prevent them.
- Detailed information on performing all functions throughout the entire lifecycle of Boatee Smart 1.3

By carefully following this manual, you can:

- Avoid hazards.
- Reduce repair costs and downtime.
- Increase the reliability and service life of your motor.

### 1.2 Structure of safety warnings

Safety warnings in this manual are represented by standardised figures and symbols.

You must follow the instructions in this manual.

The hazard classes described are used depending on the likelihood of the hazard occurring and the severity of the consequences.

#### **Safety warnings**

 DANGER!

**Immediate danger with a high risk.**

The consequences may be death or serious physical injury if the risk is not avoided.

 CAUTION!

**Possible danger with a moderate risk.**

The consequences may be death or serious physical injury if the risk is not avoided.

 CAUTION!

**Danger with a low risk.**

Consequences may include minor or moderate physical injury if the risk is not avoided.

#### Notes

NOTE

**Important notes that must be strictly observed.**

User tips and other particularly useful information.

## 2. Product overview

Boatee Smart 1.3 is an innovative electric outboard motor, equipped with a touchscreen display and an external battery. It is designed to maximise efficiency and simplify use.

Thanks to its lightweight and compact design, it is intuitive to use, easy to transport and store.

### 2.1 Contents of the package

Upon opening the package, please check that all the components listed below are present. If any component is missing or defective, please contact customer service or your authorised dealer.

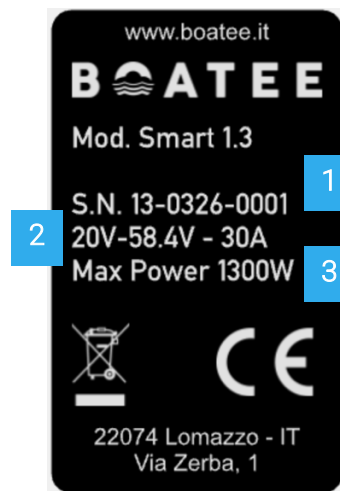
---

Boatee Smart 1.3 Motor	1	Motor complete with bracket
Safety release	1	Magnetic release complete with floating wrist strap
Propeller	1	3-blade propeller
M8 self-locking nut	2	Propeller shaft nut
Steel pin	2	Propeller locking pin
Anode	1	Sacrificial anode for propeller shaft
Battery charger	1	Charger suitable for the battery selected at the time of purchase

---

## 2.2 Identification

You will find the label with the product identification details and the serial number on the side of the motor bracket.

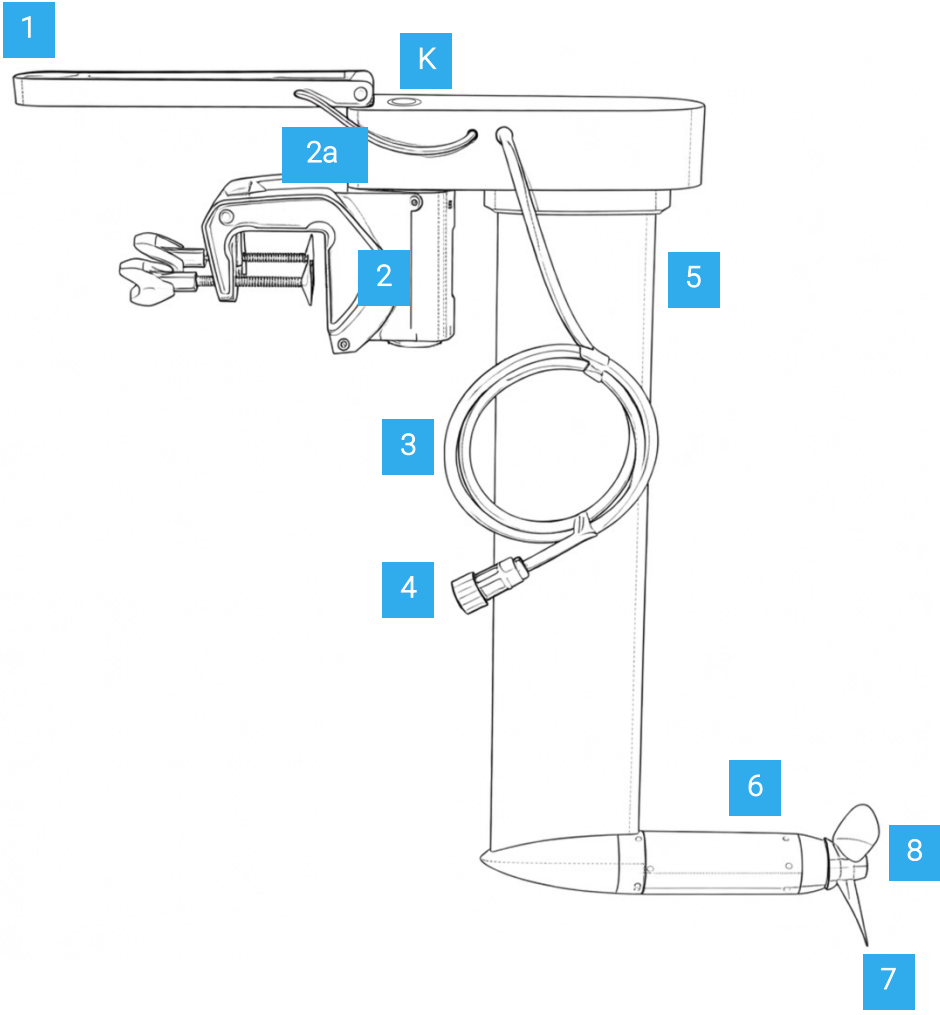


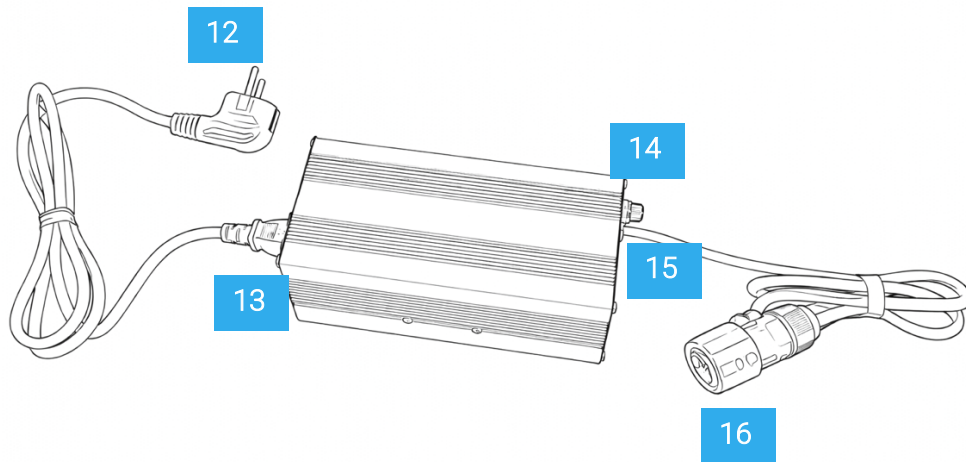
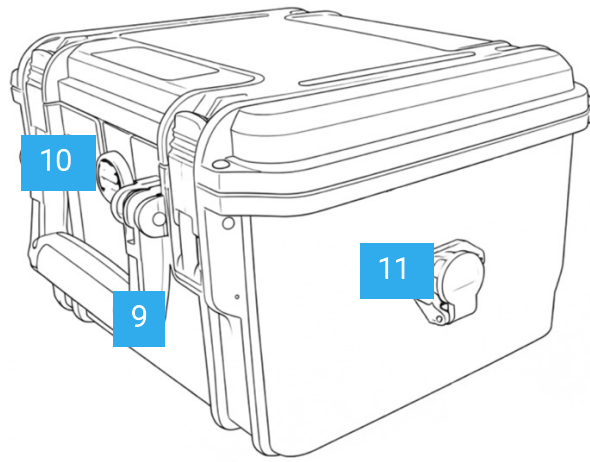
1. Motor identification serial number
2. Operating voltage and current
3. Maximum power

### NOTE

For any warranty or after-sales service enquiries, you will need to provide the serial number.

2.3 Diagram and component names





Motor:

1. Touchscreen display
2. Bracket – 2nd trim lever
3. Power cable
4. Connector
5. Shaft
6. Motor pod
7. Propeller
8. Propeller clamping nut and sacrificial anode
- K. Kill-switch position

#### Battery:

9. Handle
10. Vent valve
11. Connector

#### Battery charger:

12. AC plug
13. ON/OFF button
14. Fuse
15. Status LED
16. Connector

## 2.4 Technical specifications

### Motor

Input power	1300W
Motor type	Brushless DC
Minimum voltage	20V
Maximum voltage	58.4V
Outboard weight (with bracket)	~7kg
Shaft length	48 cm
Maximum propeller speed (theoretical)	5256 rpm
Control type	Touch
Rudder	Tiller
Tilt	Manual (8 steps)

---

Trim	Manual (8 steps)
Reverse	Yes
Overall dimensions (HxWxD)	60x78x15 cm

---

### 3. Safety

The Boatee Smart 1.3 has been designed and manufactured with the utmost care and particular attention to comfort, ease of use and safety, and has been thoroughly tested prior to dispatch.

However, in the event of unintended use of the motor or battery, this may result in danger to the user or third parties and significant material damage.

#### 3.1 Safety devices

Magnetic stop chip	This causes the motor's electronic system to switch off. The propeller is then stopped.
Electronic protection against uncontrolled start-up	Prevents the propeller from starting up uncontrollably. To start sailing, the gear selector must first be in neutral.
Electronic overcurrent protection	Prevents the motor's maximum operating current from being exceeded.
Over-temperature protection	Automatic power reduction in the event of the motor or electronic control system overheating.
Over-discharge protection	Reduction or interruption of power in the event of excessive battery discharge

#### 3.2 General safety instructions

##### NOTE

Read and strictly observe the safety instructions and warnings contained in this manual before operating the motor or battery.

- Failure to observe these instructions may result in personal injury or damage to property.
- Boatee accepts no liability for damage resulting from actions contrary to this manual.

Special safety regulations may apply to certain operations. The relevant safety instructions and warnings are set out in the respective sections of the manual.

You must also comply with the applicable local safety and accident prevention regulations.

### 3.3 Intended use

The Boatee Smart 1.3 is a fully electric propulsion system for watercraft designed for use in fresh or salt water. The water must be of sufficient depth and free from chemicals.

Intended use also includes:

- Securing the motor to the designated mounting points and observing the specified torques and the vessel's maximum permissible weight.
- Compliance with all instructions in this manual.
- Adherence to maintenance and service intervals and general care of the motor.
- The exclusive use of genuine spare parts.

### 3.4 Reasonably foreseeable improper use

Any use other than that defined in section 5.3, "Intended use", or which deviates from it, is to be considered improper.

Liability for damage resulting from improper use lies solely with the operator; the manufacturer, on the other hand, accepts no liability.

Furthermore, the following are considered non-compliant:

- Operation of the propeller out of the water.
- Operation in water containing chemicals or where the water depth is insufficient.
- The use of Boatee Smart 1.3 on vehicles other than watercraft.
- The use of Boatee Smart 1.3 with third-party batteries not included in the official list available on the website [www.boatee.it](http://www.boatee.it)
- Any modification of the product or any part thereof.

### 3.5 Before use

#### WARNING!

##### **Risk of death due to inability to manoeuvre the boat!**

The consequences may include serious injury or death.

- Before setting out, familiarise yourself with the intended sailing area and check the forecast weather and sea conditions.
- Depending on the size of the boat, ensure you have the standard safety equipment ready (anchors, paddles, communication devices, and an auxiliary engine if required).
- Before setting sail, check that the engine and battery show no visible mechanical damage.
- Only sail when the system is in perfect working order.

The Boatee Smart 1.3 may only be operated by qualified persons who are physically and mentally fit.

Comply with the relevant national regulations in force.

- The boat operator is responsible for the safety of those on board and for all vessels and persons in the vicinity. Therefore, strictly observe the basic rules of conduct for operating boats and read this manual thoroughly and carefully.
- Particular care must be taken when people are in the water, even when travelling at low speed.
- Follow the boat manufacturer's instructions regarding permitted engine power. Do not exceed the specified load and power limits.
- Check the condition and all functions of the Boatee Smart 1.3 (including the ) at low power before each trip.
- Familiarise yourself with all the engine controls. In an emergency, it is particularly important to be able to stop the engine quickly.
- Stop the engine immediately if anyone falls overboard.
- Follow the battery manufacturer's instructions and the guidance provided in the user manual regarding correct charging.
- Use only batteries listed in the official list available on the website [www.boatee.it](http://www.boatee.it) and the battery charger supplied.
- Never use batteries that are not compatible with the motor. If in doubt, please consult your local dealer or contact Boatee at [supporto@boatee.it](mailto:supporto@boatee.it).

- When the battery is not in use, disconnect it from the motor.
- Before connecting the battery, check the cable is in good condition and clean the contacts on both the battery and the connecting cable.
- The battery and motor must not come into contact with solvents, such as thinners, alcohol, oil, rust inhibitors or aggressive surface cleaning products, such as detergents.
- Do not subject the battery to mechanical impact.
- Do not open the battery casing.
- Protect the battery from mechanical damage. Do not reuse or recharge the battery if the casing is damaged.
- Do not recharge the battery for longer than necessary.
- Always recharge the battery under adult supervision and on a non-flammable surface non-flammable surface.
- Keep the motor and battery out of the reach of children.
- Do not store the battery in places where it is exposed to rain. High temperatures and high humidity can compromise the insulation's resistance and cause self-discharge and corrosion.
- After use, do not leave the battery exposed to the sun to prevent overheating and consequent damage to the cells.
- If using a different propulsion method (boat towing, sailing or other engines), the motor must be removed or raised to prevent damage to the electronics.
- Do not operate the motor out of the water. The shaft seal rings may overheat and become damaged, causing irreversible damage to the motor.

#### NOTE

Batteries are classified as UN Class 9 dangerous goods. Shipment by courier must be carried out in special packaging. Private transport is not affected. When transporting privately, take care that the battery casing is not damaged.

Please note that since 2009, **lithium batteries with a capacity >100 Wh may not be carried as luggage on passenger flights**. The motor battery exceeds this limit. Please contact the airline for further information.

### 3.6 General safety warnings

 **DANGER!**

**Risk of death from electric shock!**

Contact with uninsulated or damaged parts can cause death or serious injury.

- Do not use damaged chargers.
- Do not carry out any unauthorised repairs on the motor or battery.
- Never touch stripped or severed cables or components that are clearly defective.
- Disconnect the battery immediately if a fault is detected and do not touch any metal parts.
- Ensure that electronic components do not come into contact with water.
- Avoid applying excessive mechanical force to the battery and motor cables.

 **DANGER!**

**Risk of explosion due to gas build-up!**

The consequences may be death or serious physical injury.

- If the motor or battery is accidentally submerged in water, contact Boatee support and do not attempt to retrieve them.

 **DANGER!**

**Risk of death from fire!**

- Using different chargers may cause a fire. Use only the power supply provided by Boatee and disconnect the battery once it has reached full charge.

 **DANGER!**

**Risk of death from lithium fires!**

The consequences can be death or serious physical injury.

- Water is not suitable for extinguishing lithium fires; if possible, extinguish the fire using appropriate extinguishing agents.
- Use water to cool the battery and prevent the fire from spreading.
- Place the battery in a position where it can cause as little damage as possible.

 **DANGER!**

**Danger of death from electromagnetic radiation!**

The consequences can be death or serious physical injury.

- People with pacemakers must keep a minimum distance of 50 cm from the motor and the magnetic chip of the emergency stop.

 **WARNING!**

**Risk of death due to inability to manoeuvre the boat!**

The consequences may include serious injury or death.

- Before setting out, find out about the intended area of navigation and check the forecast weather and sea conditions.
- Depending on the size of the boat, have the standard safety equipment ready (anchors, paddles, communication devices, and an auxiliary engine if required).
- Before setting sail, check that the engine and battery show no visible mechanical damage.
- Only sail when the system is in perfect working order.

 **WARNING!**

**Mechanical hazard from rotating parts!**

The consequences can be serious injury or death.

- Do not wear loose clothing or jewellery near the drive shaft or propeller. Long, loose hair must be tied back.
- Always switch off the engine if there are people in the immediate vicinity of the propeller.
- Always disconnect the battery before carrying out maintenance or cleaning work on the motor.
- Only use the propeller underwater.

 **WARNING!**

**Risk of death due to overestimating the remaining battery life!**

The consequences can be serious injury or death.

- Before setting out, familiarise yourself with the navigation area and the weather and sea conditions, as the range displayed by the on-board computer may decrease very rapidly in adverse weather conditions.
- Allow for a sufficient reserve to cover the required range.

 **CAUTION!**

**Risk of burns due to high-temperature surfaces or liquids!**

The consequences may include minor or moderate physical injury.

- Use appropriate personal protective equipment.
- Do not touch the drive components or batteries immediately after use.
- Allow the motor and batteries to cool down before carrying out work in the immediate vicinity.

 **CAUTION!**

**Risk of crushing due to the engine tilting!**

This may result in minor to moderate physical injury.

- When tilting the engine, ensure that no one is standing in the vicinity.
- Take care not to put your hands into the mechanical parts whilst tilting the engine.

 **CAUTION!**

**Rare risk of battery electrolyte gas escaping!**

This may result in minor to moderate damage to health.

- Avoid skin contact and do not inhale the vapours.

- Immediately wash the affected area with plenty of clean water.
- Seek medical attention immediately.

## 4. Assembly

We have designed your Boatee Smart 1.3 to be ready for use right from the start, keeping assembly to a minimum. The motor and its main components arrive fully assembled to ensure maximum simplicity. All you need to do is fit the propeller and connect the battery.

### 4.1 Fitting/replacing the propeller

#### WARNING!

##### **Mechanical hazard from rotating parts!**

The consequences can be serious injury or death.

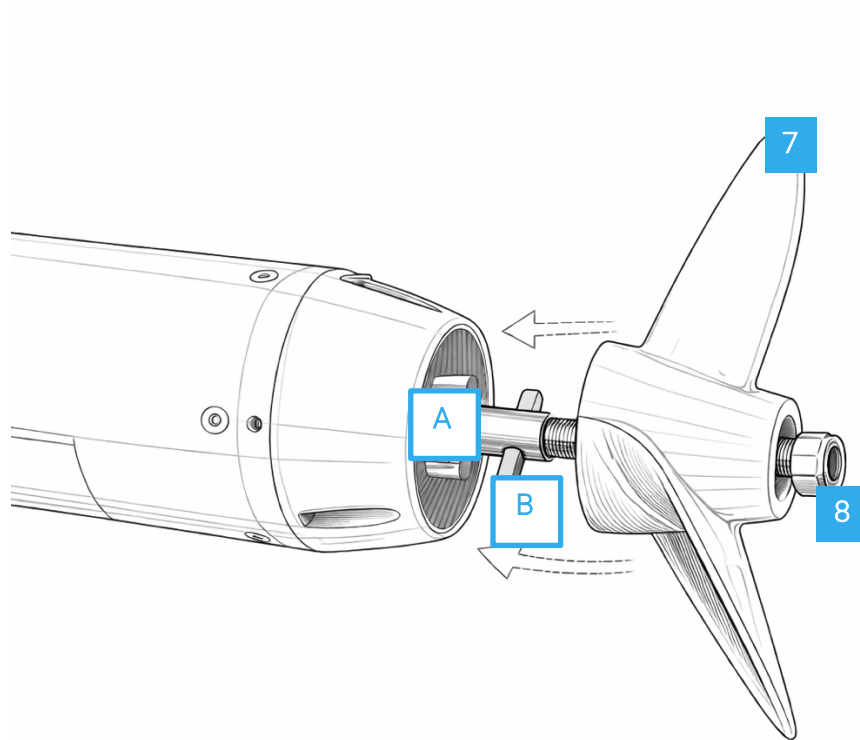
- Do not wear loose clothing or jewellery near the drive shaft or propeller. Long, loose hair must be tied back.
- Always switch off the motor if there are people in the immediate vicinity of the propeller.
- Always disconnect the battery before carrying out maintenance or cleaning work on the motor.
- Only use the propeller underwater.

#### CAUTION!

##### **Risk of injury from the propeller!**

This may result in cuts.

- Wear protective gloves



- Remove the magnetic stop chip.
- Disconnect the cable between the motor and the battery.

#### To remove the propeller:

- Unscrew the propeller (8 if fitted) using a suitable wrench.
- Unscrew the hex nut (8) using a suitable socket wrench.
- Detach the propeller (7) from the propeller shaft (A).
- Remove the cylindrical pin (B), taking care not to lose it.

#### To fit the propeller:

- Insert the cylindrical pin (B) so that it is centred on the drive shaft (A).
- Insert the propeller (7) onto the drive shaft until it stops.
- Ensure that the cylindrical pin (B) is correctly aligned and fully seated in the propeller groove.
- Tighten the hex nut (8) by hand (13 Nm).

- Screw in the anode (8 if fitted) using a socket wrench of the appropriate size.

## 4.2 Mounting the engine on the boat

### CAUTION!

#### **Risk of crushing due to the motor tilting!**

This may result in minor to moderate physical injury.

- When tilting the engine, ensure that no one is standing near it.
- Take care not to put your hands into the mechanical parts whilst tilting the engine.

### NOTE

Ensure you are in a stable position when mounting the outboard motor.

- Place the outboard motor on the transom of the boat.
- Secure the outboard motor using the two bracket turnbuckles (2) and tighten the screws firmly.
- Check that the outboard is securely positioned.

## 4.3 Adjusting the engine trim

By adjusting the trim, you can achieve the optimum position of the engine relative to the water surface.

To adjust the engine to the optimum position relative to the water surface, proceed as follows:

- Push lever (2.a) downwards.
- Tilt the engine to the desired angle, keeping the lever (2.a) pressed down.
- Release the lever and move the engine slightly up or down until it locks into the desired angle.

## 4.4 Connecting and charging the battery

### DANGER!

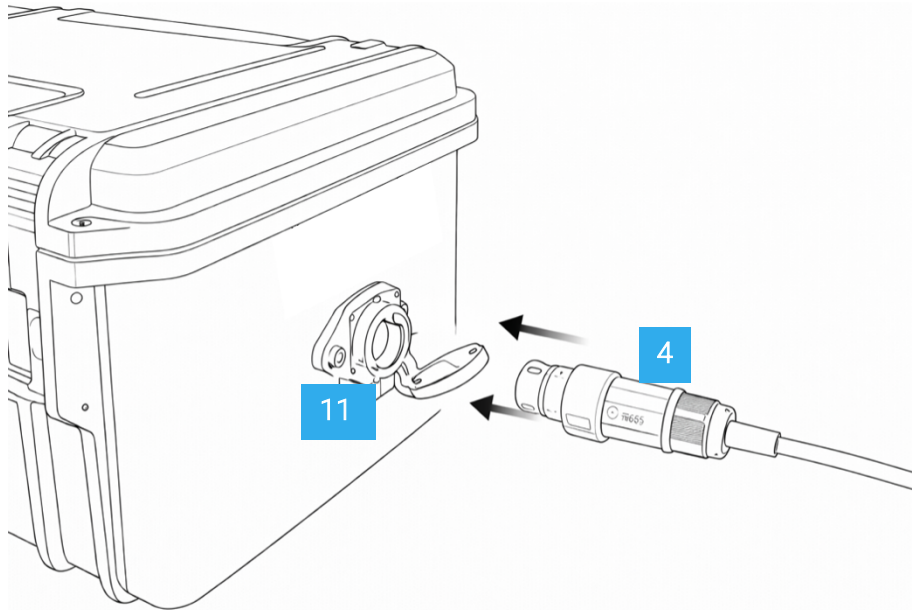
#### **Risk of death from electric shock!**

Contact with uninsulated or damaged parts can cause death or serious injury.

- Use only the charger supplied.
- Do not use damaged chargers.
- Do not carry out any unauthorised repairs on the motor or battery.
- Never touch stripped or severed cables or components that are clearly defective.
- Disconnect the battery immediately if a fault is detected and do not touch any metal parts.
- Ensure that electronic components do not come into contact with water.
- Avoid applying excessive mechanical force to the battery and motor cables.

### NOTE

- The battery must be placed on a flat, dry surface.
- Do not leave the battery in direct sunlight.
- Do not leave the battery connected when the motor is not in use.
- Take care not to crush the engine-to-battery connection cable.
- Do not apply excessive force when connecting the battery to avoid deforming the terminals.
- When the charging process is not in progress, the protective cover on the battery connection must remain closed
- The battery and power supply must not be covered during the charging process.



To connect the battery:

- **Ensure that the magnetic stop chip is disconnected and positioned at least 30 cm away from the motor.**
- Insert the motor cable connector (4) into the corresponding socket on the battery (11) or on the supplied adapter.
- The socket on the battery/adapter (11) is fitted with an automatic cover to prevent the build-up of dirt and dust. Open it before inserting the motor cable.
- Apply gentle pressure until the connector (4) is securely locked in place.
- Before reconnecting the magnetic chip to the motor, ensure that the connector is securely fastened.

To disconnect the battery:

- **Ensure that the magnetic stop chip is disconnected and positioned at least 30 cm away from the motor.**
- Turn the blue ring on the motor cable connector (4) in the release direction, as indicated on the connector itself.
- Remove the motor cable connector (4) from the corresponding socket on the battery or adapter (11).

To recharge the battery:

- **Use only the charger supplied.**

- Insert the charger cable connector (16) into the appropriate socket on the battery or adapter (11).
- The socket on the battery (11) is fitted with an automatic cover to prevent the build-up of dirt and dust. Open it before inserting the charger cable.
- Apply light pressure until the connector (16) is firmly locked in place.
- Connect the charger to the mains using the AC plug (12).
- Once the maximum charge level is reached, charging stops automatically.
- Disconnect the charger and close the protective flap. Do not leave the battery connected to the charger once charging is complete.

## 5. Operation

The Boatee 1.3 has been designed to ensure maximum comfort during use. A key feature of this design is the magnetic emergency stop chip, which performs an important safety function. In the event of a fall into the water, it instantly stops the motor. For this reason, ensure you always attach it to your wrist or life jacket before setting off.

### WARNING!

#### **Risk of death due to inability to manoeuvre the boat!**

The consequences may include serious injury or death.

- Before setting out, familiarise yourself with the intended sailing area and check the forecast weather and sea conditions.
- Depending on the size of the boat, have the standard safety equipment ready (anchors, oars, means of communication, and an auxiliary engine if required).
- Before setting sail, check that the engine and battery show no visible mechanical damage.
- Only sail when the system is in perfect working order.

### WARNING!

#### **Risk of death from overestimating the remaining range!**

The consequences can be serious injury or death.

- Before setting sail, familiarise yourself with the sailing area and the weather and sea conditions, as the range displayed by the on-board computer may decrease very rapidly in the event of adverse weather conditions.
- Allow for a sufficient reserve to cover the required range.

### NOTE

After use, always lift the engine out of the water by tilting it or removing it from the transom, and store the battery in a dry place away from direct sunlight.

## 5.1 Emergency stop

### DANGER!

#### **Risk of death if the emergency stop is not activated!**

The consequences can be death or serious physical injury.

- Attach the emergency stop cord to your wrist or life jacket.

### DANGER!

#### **Risk of death from electromagnetic radiation!**

The consequences can be death or serious physical injury.

- People with pacemakers must keep a minimum distance of 50 cm from the motor and the magnetic chip of the emergency stop.

### NOTE

- Check that the emergency stop is working properly before each start-up.
- In an emergency, activate the emergency stop immediately.

To stop the engine in an emergency, you can:

- Move the gear selector to the N (neutral) position using the (+) and (-) controls on the touchscreen or by tapping the speed indicator in the centre of the screen (E).
- Remove the magnetic emergency stop chip (kill switch) (K) by pulling the cord.

**Only** if the magnetic emergency stop chip fails to work, disconnect the cable connected to the battery directly.

## 5.2 Starting the journey

### NOTE

- If there is visible damage to components or cables, the engine must not be started.
- Ensure that everyone on board is wearing a life jacket and that all safety regulations for navigation are observed.
- Before departure, attach the emergency stop lanyard to your wrist or life jacket.
- Check the battery charge level constantly and carefully during the journey and, if necessary, adjust the speed.

### NOTE

- In shallow water or near swimmers, remove the magnetic stop chip to prevent the engine from starting accidentally.

The engine starts automatically when the magnetic emergency stop chip is placed in the designated position (K).

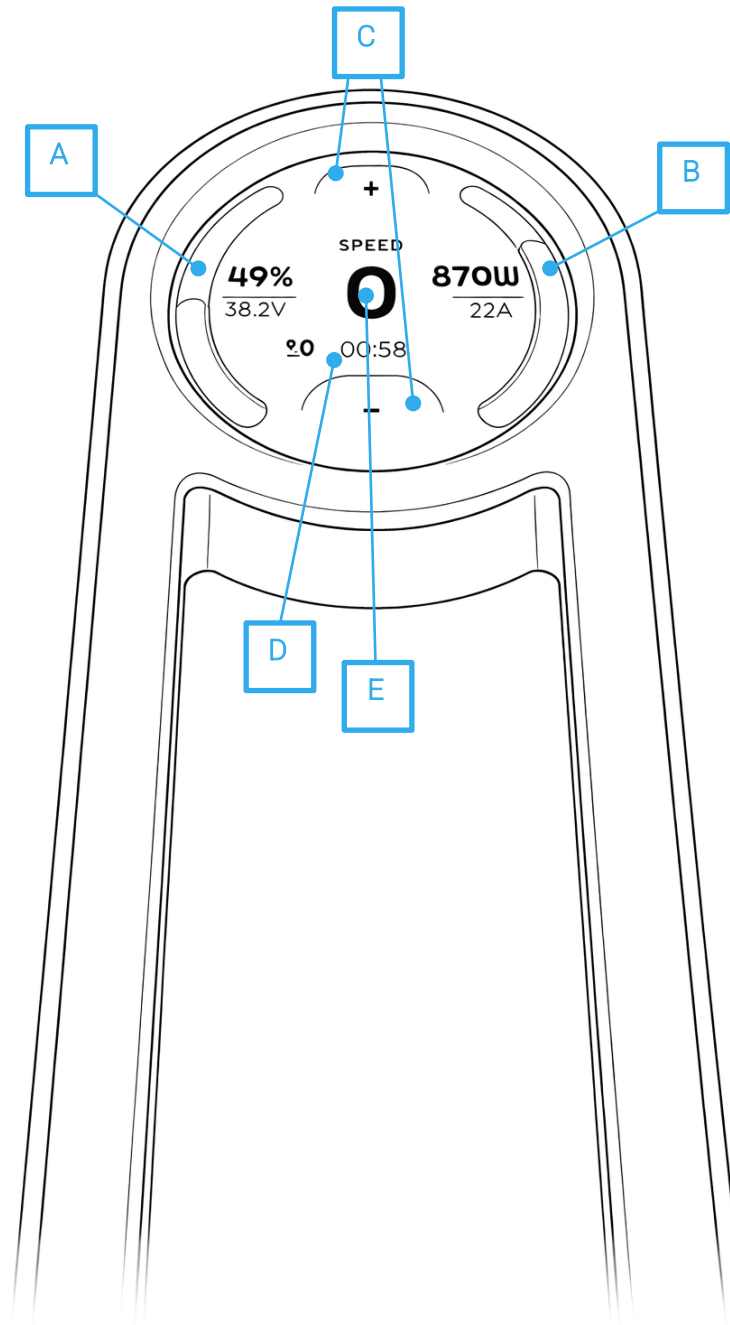
- Ensure that the battery is correctly connected to the engine following the instructions in section 6.4.
- Connect the magnetic emergency stop chip.
- Wait a few moments until the display on the tiller bar lights up.
- The engine is now running and ready to sail. The gear is in N (neutral).

## 5.3 Using the touch screen

Boatee Smart 1.3 is equipped with a touchscreen display located on the control bar. The screen shows important navigation data and allows you to adjust the motor power with precision.

## NOTE

- Always clean the touchscreen before and after each use with a microfibre cloth. Avoid water or dirt build-up.
- Remove the magnetic stop chip before cleaning the display to prevent the motor from being activated accidentally.



### Display:

- A. Battery status indicator
  - a. Charge percentage
  - b. Voltage
- B. Instantaneous power indicator
  - a. Power
  - b. Current
- C. Control buttons
- D. Remaining range
- E. Drive indicator

## 5.4 Forward / reverse

Controlling the Boatee Smart 1.3 is simple and intuitive. The motor offers 10 forward speeds and 5 reverse speeds.

On start-up, the motor is always in **N** (neutral) position.

### To accelerate:

- Press the **'+' button** at the top of the display to move forward. Each press increases the speed.

### To slow down/stop:

- Press the **'-' button** at the bottom of the display to reduce speed until it returns to the **N** (neutral) position.
- To stop the motor instantly, press the speed indicator in the centre of the screen (E).

### To engage reverse gear:

- From **N** (neutral), press the **'-' button** to engage reverse. Each subsequent press increases the reverse speed.

## 5.5 Steering

To change the boat's direction, hold the tiller firmly and turn it in the opposite direction to where you want the bow of the boat to go.

To turn left:

- Turn the tiller to starboard.

To turn right:

- Turn the tiller to port

To go straight ahead:

- Keep the tiller straight

#### NOTE

- Always hold the tiller firmly whilst navigating.
- A sudden wave or contact with floating objects or the seabed can cause the motor to change direction abruptly.

## 6. Maintenance and servicing

Maintenance of your Boatee Smart 1.3 has been kept to a minimum to ensure maximum simplicity. The most important step is to rinse all submerged parts with fresh water immediately after each use.

This is essential for preserving the motor over time, especially after use in salt water.

The motor's surfaces can be cleaned with standard household cleaning products. Do not use harsh cleaning agents on plastic or aluminium parts.

Every two months, spray all electronic contacts with the appropriate contact cleaner.

### NOTE

Maintenance work may only be carried out by specialised and qualified personnel. Contact Boatee support or an authorised partner.

- The magnetic chip of the emergency stop and the battery must be disconnected before carrying out maintenance and/or cleaning work

### 6.1 Corrosion prevention

To minimise the effects of galvanic corrosion, take the following precautions:

- Store the motor in a dry place only.
- Regularly maintain the cable connections using a suitable contact spray (e.g. Wetprotect).
- Regularly grease the threads of the bracket's wing nuts.
- After use in salt water, rinse the motor with fresh water.
- If the motor is used in salt water, zinc anodes must be used.

The anode must be visually inspected after every use. If the anode shows signs of excessive corrosion, it must be replaced. It is recommended to replace the anode every 12 months of use in any case.

## NOTE

For information regarding spare parts and their installation, please contact Boatee customer service or an authorised partner.

## 7. General warranty conditions

The Boatee Smart 1.3 is designed to offer reliability and a long service life. Should any problems arise, the following conditions govern the applicable warranty.

### 7.1 Duration and validity of the warranty

The Boatee Smart 1.3 motor is covered by a 24-month statutory warranty.

The warranty commences on the date of delivery of the product to the end customer and covers all system components, unless otherwise specified in this chapter.

### 7.2 Warranty coverage

The warranty is valid for two (2) years from the date of delivery of the product to the end purchaser.

Products used, even temporarily, for commercial purposes or by public bodies are excluded from the 24-month warranty. In such cases, a 12-month warranty applies.

Warranty claims must be made within six (6) months of the defect being discovered.

### 7.3 Warranty coverage

The warranty is valid for two (2) years from the date of delivery of the product to the end purchaser.

Products used, even temporarily, for commercial purposes or by public bodies are excluded from the 24-month warranty. In such cases, a 12-month warranty applies.

Warranty claims must be made within six (6) months of the defect being discovered.

The decision to repair or replace defective components rests solely with Boatee. Distributors and retailers are not authorised to issue binding statements or warranty commitments on behalf of Boatee.

The following are excluded from the warranty:

- All parts subject to normal wear and tear;
- routine maintenance.

Boatee reserves the right to refuse a warranty claim in the following cases:

- the claim has not been submitted correctly (e.g. failure to contact us before returning the product, lack of proof of purchase or incomplete documentation);
- the product has been tampered with or modified;
- the safety, usage and maintenance instructions in the manual have not been followed;
- the prescribed maintenance intervals have not been observed or documented;
- the product has been altered, modified or fitted with parts or accessories not approved or recommended by Boatee;
- maintenance or repair work has been carried out by unauthorised centres or using non-genuine spare parts.

## 7.4 Rights of the purchaser

This warranty does not limit or replace the end purchaser's rights arising from the purchase contract entered into with the retailer.

## 7.5 Warranty Procedure

Compliance with the warranty procedure described below is a prerequisite for the recognition of warranty rights.

To ensure your warranty claims are handled quickly and efficiently, please follow these instructions:

- For any complaint, please contact Boatee support in advance. The service will provide you with a case reference number, if necessary.
- When making your claim, please have your proof of purchase and the completed warranty certificate to hand.
- If you are sending the product to the Boatee service centre, please ensure it is packed securely for transport. Damage caused by improper handling during transit is not covered by the warranty.

For further information on the warranty procedure, please contact Boatee at [supporto@boatee.it](mailto:supporto@boatee.it) .

## 8. Disposal and the environment

The Boatee Smart 1.3 motor, its electronic components and batteries must be disposed of in accordance with the regulations in force in the country of use.

Electrical and electronic products and batteries must not be disposed of with unsorted household waste. At the end of their useful life, they must be taken to authorised collection points or disposed of via the locally designated disposal systems.

For information on correct disposal, please refer to local regulations or contact your Boatee dealer.

## 9. Copyright

This manual and all content included therein (text, images, drawings and other materials) are protected by copyright.

Any reproduction, even partial, distribution or use without the prior written authorisation of Boatee is prohibited.

Boatee reserves the right to amend this document at any time and without notice.

Every effort has been made to ensure the accuracy of the information contained herein; however, Boatee cannot be held liable for any errors or omissions.

## EU Declaration of Conformity



**Model:** Boatee 1.3 Smart motor

**Manufacturer:** Boatee by Cesare Malescia

Via Zerba, 1

22074 Lomazzo (CO)

VAT No. IT04230520134

REA CO-429553

We hereby declare that it complies with the essential requirements set out in the following directives and regulations:

---

<b>DIRECTIVE 2013/53/EU</b> Recreational Craft Directive	Applicable harmonised standards: <ul style="list-style-type: none"><li>• EN ISO 16315:2016</li><li>• EN ISO 25197:2020/A11:2023</li></ul>
<b>DIRECTIVE 2006/42/EG</b> Machinery Directive	Applicable harmonised standards: <ul style="list-style-type: none"><li>• EN ISO 12100:2010</li></ul>
<b>DIRECTIVE 2014/53/EU</b> Radio Equipment Directive	Applicable harmonised standards: <ul style="list-style-type: none"><li>• Radio: EN 300328 V2.2.2</li><li>• EMC: EN 301489-1 V2.2.3 EN301489-17 V3.2.4</li><li>• Health: EN IEC 62311:2020</li><li>• Safety: EN 62368-1:2020 + A11:2020</li></ul>
<b>DIRECTIVE 2014/30/EU</b> EMC Directive	Applicable harmonised standards: <ul style="list-style-type: none"><li>• EN 61000-6-2:2019 • EN 61000-6-4:2019</li></ul>

---

This declaration of conformity is issued under the sole responsibility of the manufacturer.

Signed on 31 March 2026, in Lomazzo (CO)

Name and position: Cesare Malescia – Owner

## Warranty certificate

---

**Model**

Boatee 1.3 Smart Motor

---

**Serial Number:**

---

**Date of purchase:**

---

**Dealer name:**

---

**Dealer signature  
and stamp:**

---

The warranty is valid for two (2) years from the date of delivery of the product to the end purchaser. Products used, even temporarily, for commercial purposes or by public bodies are excluded from the 24-month warranty. In such cases, a 12-month warranty applies. Warranty claims must be made within six (6) months of the defect being discovered. The decision to repair or replace defective components rests solely with Boatee.

Distributors and retailers are not authorised to issue binding statements or warranty commitments on behalf of Boatee.

The following are excluded from the warranty:

- All parts subject to normal wear and tear;
- Routine maintenance.
- The battery (covered by the manufacturer's warranty)

Boatee reserves the right to refuse a warranty claim in the following cases:

- The claim has not been submitted correctly (e.g. failure to contact us before returning the product, lack of proof of purchase or incomplete documentation);
- The product has been tampered with or modified;
- The safety, usage and maintenance instructions in the manual have not been followed;
- The prescribed maintenance intervals have not been followed or documented;
- The product has been altered, modified or fitted with parts or accessories not approved or recommended by Boatee;
- Maintenance or repair work has been carried out by unauthorised centres or using non-genuine spare parts.

To ensure your warranty claims are handled quickly and efficiently, please follow these instructions:

- For any claim, please contact Boatee Customer Support in advance. The service will provide you with a case reference number, if necessary.
- When making your claim, please have your proof of purchase and the completed warranty certificate to hand.
- If you are sending the product to the Boatee service centre, please ensure it is packed securely for transport. Damage caused by improper handling during transit is not covered by the warranty.

For further information on the warranty procedure, please contact Boatee at [supporto@boatee.it](mailto:supporto@boatee.it).